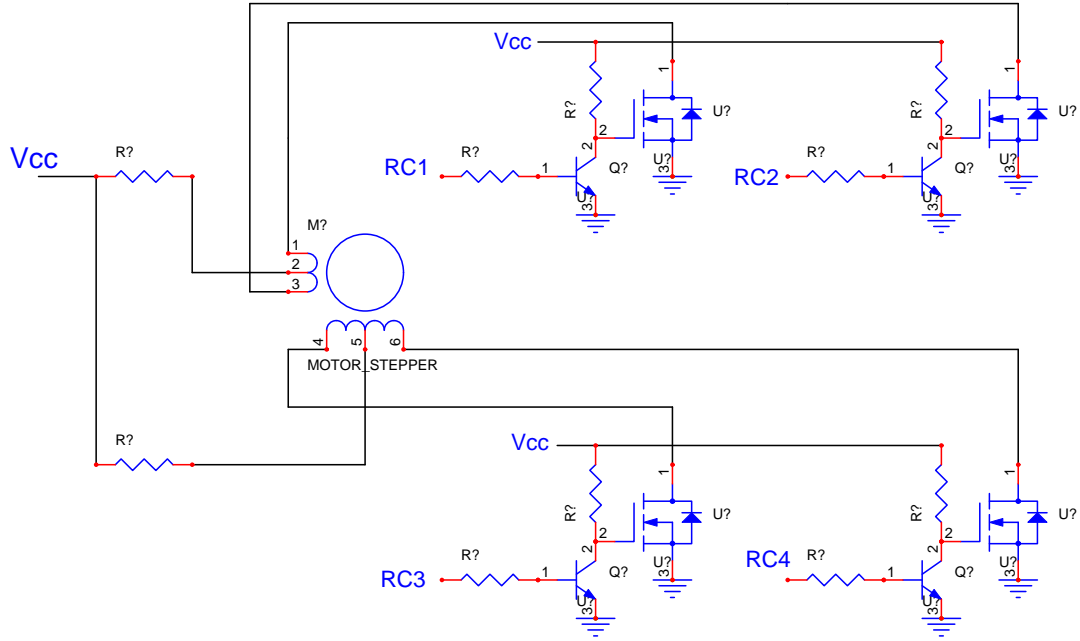


Single Phase of Welding Power Source

Complete Welder has 4 Phases using OC1,OC2,OC3,OC4

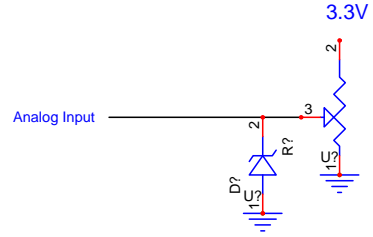
Microcad		
Title: Microcontroller Controlled Wirefeed TIG Welder (Power Supply Phase)		
Project: Welder	File: PowerPhase.sch	Page: 1/1
Number: Doc. Number	Date: Oct. 3, 2008	Rev.: 1.0

Unipolar Stepper Drive

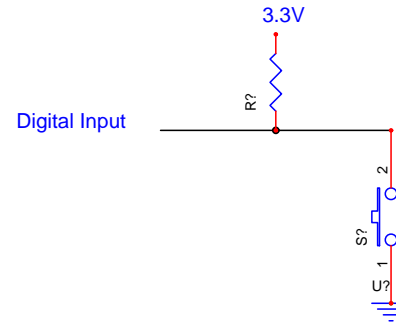


-> Jeremy Williams		
Title: Welder Motor Control		
Project: Welder	File: Motor.sch	Page: 1/1
Number: Doc. Number	Date: Oct. 6, 2008	Rev.: 1.0

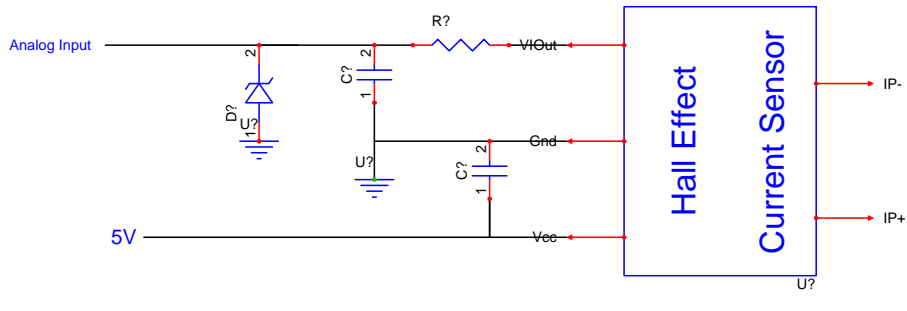
Pot Inputs



Button Inputs (as needed)

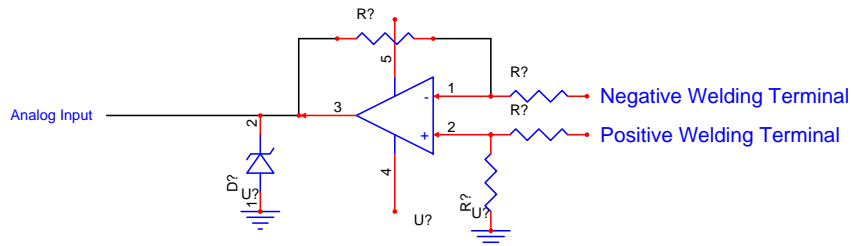


Current Sense Input



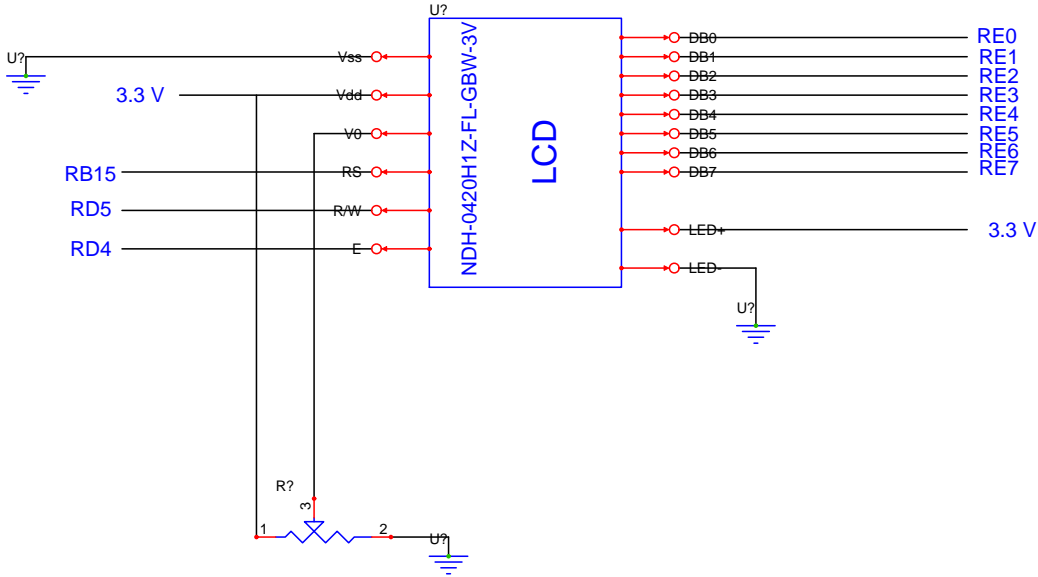
Placed in series with Tig Torch

Voltage Sense Input



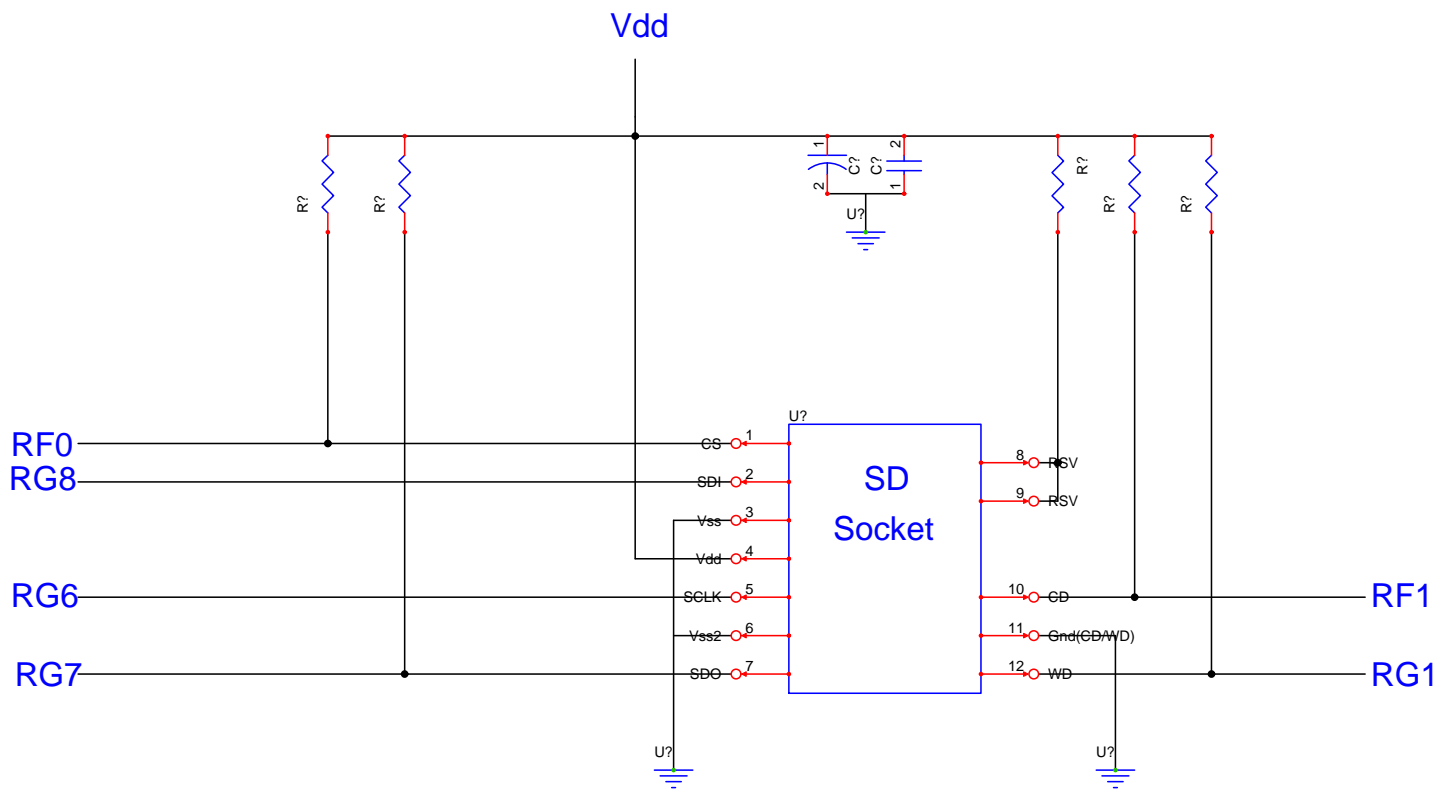
Jeremy Williams		
Title: Sensors and Inputs		
Project: Welder	File: Input.sch	Page: 1/1
Number: Doc. Number	Date: Oct. 10, 2008	Rev.: 1.0

LCD Connections



Microcad		
Title: LCD Module		
Project: Welder	File: LCD.sch	Page: 1/1
Number: Doc. Number	Date: Oct. 10, 2008	Rev.: 1.0

SD Card Interface



Jeremy Williams		
Title: SD Card Interface		
Project: Welder	File: SD.sch	Page: 1/1
Number: Doc. Number	Date: Oct. 7, 2008	Rev.: 1.0